
Subject: Decompose R-Groups

Posted by [amorrison](#) on Wed, 06 Nov 2024 12:02:57 GMT

[View Forum Message](#) <> [Reply to Message](#)

Hi,

I use the decompose R-groups for SAR analysis frequently. Usually DataWarrior does a great job across multiple scaffolds of placing the R-groups in the correct place but in some cases I would like to specify what a particular substitution off the scaffold should be e.g. R1. I don't think this currently possible in the current version of DataWarrior, but would it be easy to implement?

Many thanks,
Angus

Subject: Re: Decompose R-Groups

Posted by [thomas](#) on Tue, 12 Nov 2024 18:07:24 GMT

[View Forum Message](#) <> [Reply to Message](#)

I presume it would need a non-trivial UI to do that, while I am not sure, whether I understand correctly. Do you refer to 'multiple scaffolds' matching the same query? Or actually an undesired scaffold match on a real compound if there are multiple matches because of symmetry?

How would like to indicate critical cases before running the deconvolution or 'correct' assignments for individual rows after it? From an UI perspective both seems rather difficult to do...

Subject: Re: Decompose R-Groups

Posted by [amorrison](#) on Sun, 17 Nov 2024 07:34:33 GMT

[View Forum Message](#) <> [Reply to Message](#)

Hi Thomas,

Thanks for getting back to me. I guess I was thinking along the lines of providing R group numbers to the scaffold as in the attached image.

No problem at all if this is too difficult from a coding perspective and thanks for getting back to me.

Angus

File Attachments

1) [R_Grp_Decompose.png](#), downloaded 520 times

Decompose R-Groups

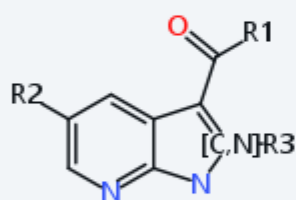
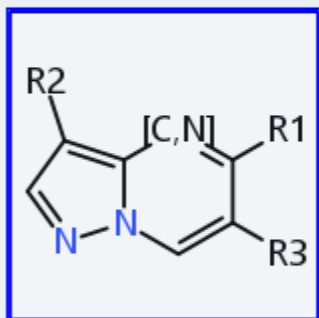
Structure column:

Structure

Determine scaffold as:

Custom sub-structure(s)

Define custom scaffold sub-structures:



Use existing columns for scaffold and R-groups

Help

Cancel