
Subject: DW 6.0 Windows version can not start
Posted by [zhentg](#) on Fri, 05 Jan 2024 06:51:08 GMT
[View Forum Message](#) <> [Reply to Message](#)

Hi Thomas,

We are eager to learn new features of DW 6.0.
After the Windows version installation(at C:\Program Files), launching DataWarrior.exe leads to a pop up error:Could not create the Java virtual machine.

Could you figure out the solution?

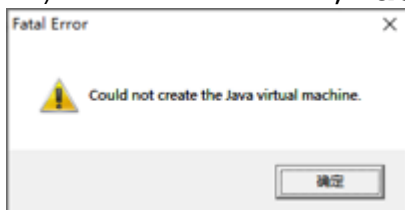
My computer environment is

- Win10
- Java(TM) SE Runtime Environment (build 1.8.0_391-b13) x64

Thanks
Zhenting

File Attachments

1) , downloaded 334 times



Subject: Re: DW 6.0 Windows version can not start
Posted by [thomas](#) on Fri, 05 Jan 2024 13:11:40 GMT
[View Forum Message](#) <> [Reply to Message](#)

Hi Zhenting,

Did you de-install the old version from the control panel before installing the new one? You may try to de-install again, then delete the "C:\Program Files\DataWarrior" manually, in case something is not removed, and install v6.0.0 again. Did you check the md5-sum of the msi?

BTW: A Java installation is not needed, but shouldn't harm either, because DataWarrior comes with its own JRE.

Thomas

Subject: Re: DW 6.0 Windows version can not start

Posted by [zhentg](#) on Fri, 05 Jan 2024 16:01:58 GMT

[View Forum Message](#) <> [Reply to Message](#)

Hi Thomas,

- I checked the MD5 of the downloaded msi file, and the MD5 string is the same as that on the website, ced4488a05f4b9efb03b8771cb9efeba
- According to your suggestion, I uninstalled DW6, manually removed the folder, and reinstalled DW6. Now DW6 can start normally.

Thanks a lot.

Zhenting

Subject: Re: DW 6.0 Windows version can not start

Posted by [zhentg](#) on Fri, 05 Jan 2024 16:04:59 GMT

[View Forum Message](#) <> [Reply to Message](#)

Another questions: currently DW6 must be installed in "C:\Program Files\DataWarrior", can we install it somewhere else?

Subject: Re: DW 6.0 Windows version can not start

Posted by [thomas](#) on Sat, 06 Jan 2024 10:16:59 GMT

[View Forum Message](#) <> [Reply to Message](#)

No, this path is used in various places, e.g. in Registry entries to tell Windows which program to start, when a dwar file is double clicked.
