
Subject: calculated values

Posted by [sansun](#) on Thu, 18 Feb 2021 06:48:28 GMT

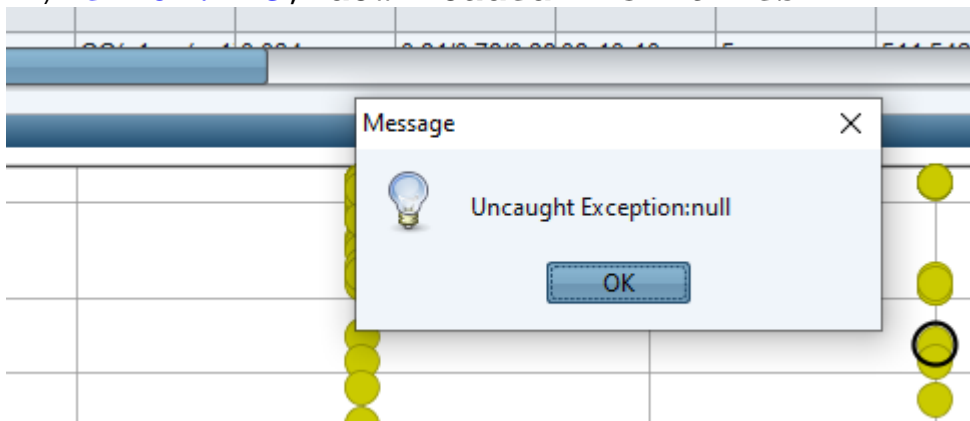
[View Forum Message](#) <> [Reply to Message](#)

While "Add Calculated Values" I am getting the following error. It happened when I earlier ran a macro which also showed the same error.

I tried closing and restarting the program, but getting the same error with this file. Although this functionality is working fine for other files.

File Attachments

1) [error.PNG](#), downloaded 1231 times



Subject: Re: calculated values

Posted by [nbehrnd](#) on Thu, 18 Feb 2021 07:48:20 GMT

[View Forum Message](#) <> [Reply to Message](#)

An indication of the DW's version used and provision of a minimal working example where DW yields this message both eases replication of the events and identification of a possible cause.

Subject: Re: calculated values

Posted by [sansun](#) on Thu, 18 Feb 2021 10:58:48 GMT

[View Forum Message](#) <> [Reply to Message](#)

I have used the latest 5.2.1 version.
I can share the file showing this error.

Subject: Re: calculated values

Posted by [thomas](#) on Mon, 22 Feb 2021 15:46:21 GMT

[View Forum Message](#) <> [Reply to Message](#)

perfect. Can you send it to my e-mail? Thanks in advance, Thomas
