
Subject: Remove 'abs' and other chiral center labels in structure depiction

Posted by [zhentg](#) on Mon, 16 Mar 2020 15:26:55 GMT

[View Forum Message](#) <> [Reply to Message](#)

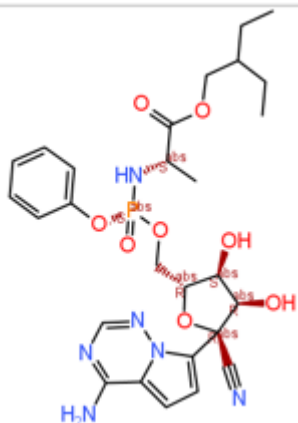
chiral labels are mandatory in structure depiction(pls check the attached image), it is helpful, but if I want to present the structures in a slide or manuscript, I want to remove these labels to keep the structure depiction simple and clear.

How to remove the chiral labels.

File Attachments

1)

, downloaded 1397 times



Subject: Re: Remove 'abs' and other chiral center labels in structure depiction

Posted by [zhentg](#) on Wed, 25 Mar 2020 08:52:19 GMT

[View Forum Message](#) <> [Reply to Message](#)

It would be nice if there is an option to switch on/off the 'abs' label display.

Subject: Re: Remove 'abs' and other chiral center labels in structure depiction

Posted by [thomas](#) on Sun, 12 Jul 2020 19:08:25 GMT

[View Forum Message](#) <> [Reply to Message](#)

For the structure view there are now flexible structure display modes concerning and stereo labels and usage of color. With this structure images should be more appropriate for presentation, papers or patents.

This change is available in the current development version.

Subject: Re: Remove 'abs' and other chiral center labels in structure depiction

Posted by [zhentg](#) on Wed, 09 Sep 2020 00:24:30 GMT

[View Forum Message](#) <> [Reply to Message](#)

Thanks for the added option.

I can turn off the stereo labels in "Structure View" panel now through the "Set Structure Stereo Display Mode" option.

Am I using the function correctly?

File Attachments

1) [dw.png](#), downloaded 1258 times

The image shows a screenshot of a chemical structure viewer. On the left, a chemical structure is displayed in a 3D view. The structure consists of a cyclohexane ring with a hydroxyl group (HO) and a fluorine atom (F) attached to a carbon atom. A context menu is open over the structure, listing various actions such as Copy, Edit, Sort by, and Set Structure Stereo Display Mode. The 'Set Structure Stereo Display Mode' option is highlighted. On the right, the 'Structure of smiles' panel is visible, showing a search filter set to 'contains' and a chemical structure of a substituted benzene ring. Below the context menu, a list of options for 'Set Structure Stereo Display Mode' is shown, including 'Full stereo information', 'ESR and CIP labels', 'CIP labels only', 'ESR labels only', and 'No labels, up/down bonds on', with the last option selected.

Subject: Re: Remove 'abs' and other chiral center labels in structure depiction

Posted by [thomas](#) on Sun, 13 Sep 2020 10:13:14 GMT

[View Forum Message](#) <> [Reply to Message](#)

Looks OK to me. One should be aware that in case of multiple stereo centers information may be lost, e.g. in case of epimers. The 'stereo display mode' can be combined with the 'color display mode' as patent layers seem to prefer black & white structures with no stereo labels.
