
Subject: Toggle-off absolute configuration while determining Murcko scaffold
Posted by [nbehrnd](#) on Wed, 21 Aug 2019 12:00:58 GMT

[View Forum Message](#) <> [Reply to Message](#)

Dear Thomas,

using both DW as well as third-party python module rdkit to determine the Murcko scaffolds of molecules including those with a stereogenic center, I noticed DataWarrior (DW) retains the stereochemical information in the trimmed fragment. Reading the same SMILES string as DW (5.0.0), rdkit (version 2019.1 with Python2) however trims this information off.

Question: Is there an option to instruct DW equally to 'forget' about this piece of information when writing the SMILES string?

Pristine SMILES string in question used in both programs:

```
C(=O)(C)O[C@H]1[C@H]([C@H](n2c3c(c(ncn3)N)nc2)O[C@@H]1CO)O
```

DW's output SMILES string about the Murcko scaffold:

```
C(C1)CO[C@H]1n1c2ncnc2nc1
```

MWE for processing with rdkit:

```
from rdkit.Chem.Scaffolds import MurckoScaffold
from rdkit.Chem import AllChem
```

```
source = 'C(=O)(C)O[C@H]1[C@H]([C@H](n2c3c(c(ncn3)N)nc2)O[C@@H]1CO)O'
mol = Chem.MolFromSmiles(source)
core = MurckoScaffold.GetScaffoldForMol(mol)
print(Chem.MolToSmiles(core))
```

```
>>> c1ncc2ncn(C3CCCO3)c2n1
```

which constitutionally is about the same molecular structure.

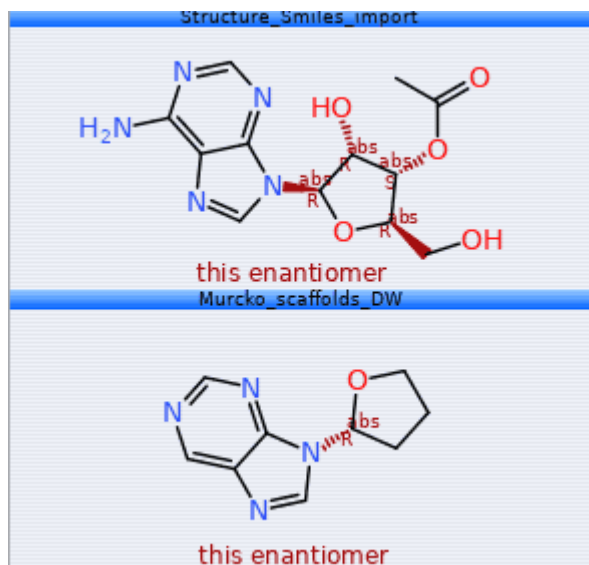
This may be more than a cosmetic issue, because the search for the Murcko scaffold of

```
Brc1ccc([C@@]2(CC(=O)CCC2)CN(=O)=O)cc1
```

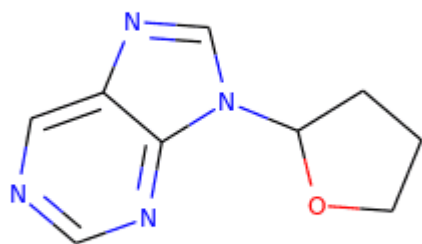
actually leads DW to invert the absolute configuration from initial R to now S (expressed by the lost of one @ in string O=C(CCC1)C[C@H]1c1cccc1).

File Attachments

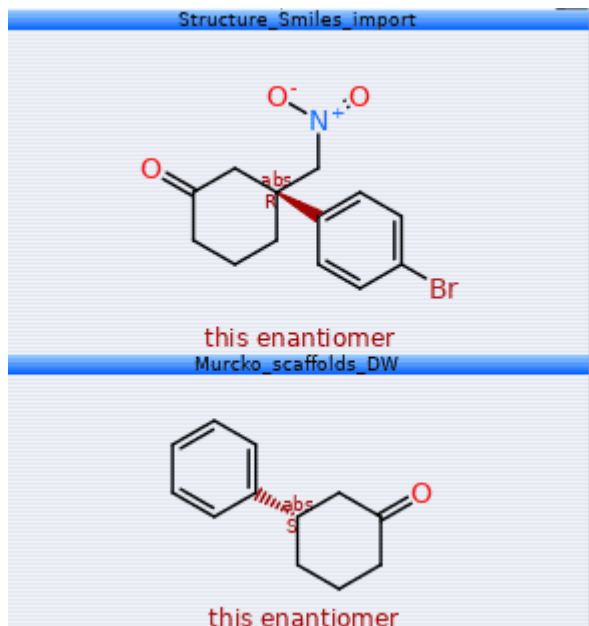
1) [DWclip.png](#), downloaded 824 times



2) [rdkit_ACADOS.png](#), downloaded 826 times



3) [ABEGUL_DW_inversion.png](#), downloaded 841 times



Subject: Re: Toggle-off absolute configuration while determining Murcko scaffold
Posted by [thomas](#) on Fri, 23 Aug 2019 23:09:03 GMT

[View Forum Message](#) <> [Reply to Message](#)

Dear Norwid,

to me the current handling is correct: the change from R to S in your sample SMILES is correct, because after the removal of the methylene-nitro group, the stereo-chemistry is correctly retained in the Murcko-scaffold.

If you generate a SMILES from the scaffold, then you may use 'Find and replace' to remove all '@' symbols from them.

Thomas

Subject: Re: Toggle-off absolute configuration while determining Murcko scaffold
Posted by [nbehrnd](#) on Sun, 25 Aug 2019 16:56:16 GMT

[View Forum Message](#) <> [Reply to Message](#)

Dear Thomas,

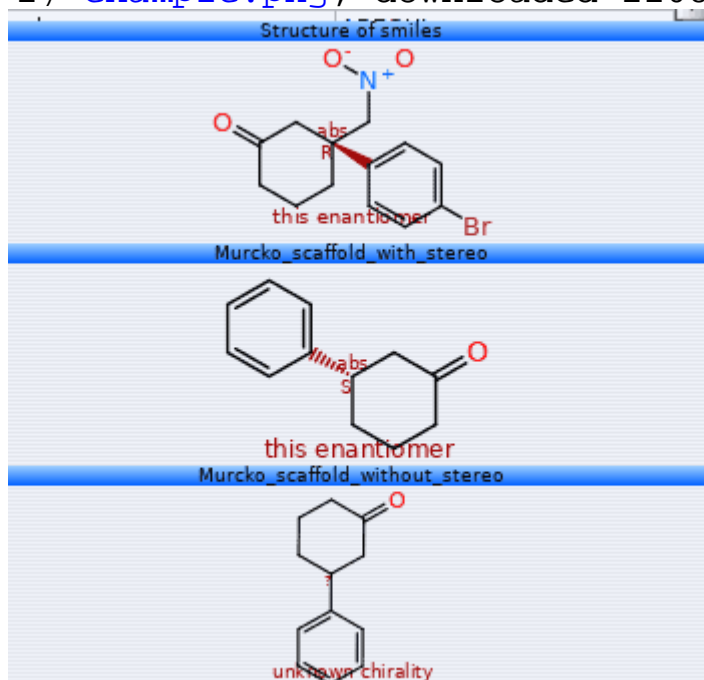
as probed, the «Find and Replace» (under the Edit tab) indeed offers exactly the tool I needed to simplify the SMILES as intended. This change both propagates well in subsequent stages of structure display

as well in the how to retrieve -- either by structure, or by string -- structures sharing a Murcko scaffold in common.

Thank you,
Norwid

File Attachments

1) [example.png](#), downloaded 1208 times



2) [example.dwar](#), downloaded 703 times
