
Subject: Chiral drawn structures in dwar / sdf different
Posted by [Dennis](#) on Tue, 05 Jun 2018 11:15:14 GMT

[View Forum Message](#) <> [Reply to Message](#)

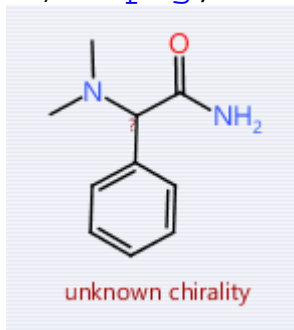
I have a question about the way a structure is presented in a dwar file compared to a sdf file. When I draw a chiral structure with unknown chirality and save this as a dwar file and open it again, I see the structure drawn as in 1.png:

When I save this file as sdf file and open this sdf file, the drawn structure is different, see 2.png:

Why is the chirality presented differently for these files? You would expect the same presentation.

File Attachments

1) [1.png](#), downloaded 2272 times



2) [2.png](#), downloaded 2174 times

