

Subject: "Don't group, connect all" Feature in DataWarrior

Posted by [yunforce](#) on Sun, 06 Oct 2024 04:17:50 GMT

[View Forum Message](#) <> [Reply to Message](#)

According to the help documentation, there is an option labeled "<Don't group, connect all>" which allows users to connect all points in both 2D and 3D views with lines. However, I have been unable to find this option in the current version of the software.

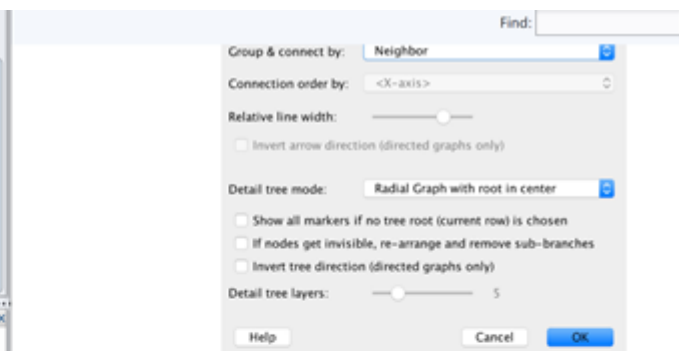
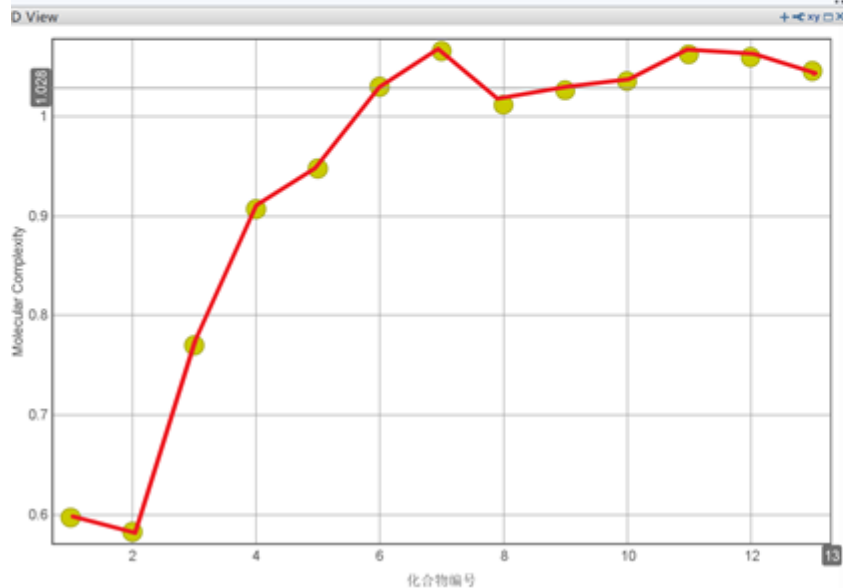
I am wondering if this feature has been removed or relocated within the interface. The ability to connect all points without grouping would be incredibly beneficial for my current project, and I am eager to utilize this functionality.

Could you please advise if this feature is still available, and if so, where I might find it? If it has been discontinued, I would appreciate knowing if there are any alternative methods or upcoming updates that would allow me to achieve a similar result.

## File Attachments

1) [2.png](#), downloaded 518 times

11		C[C@]12C310	336.434	1.0619	4	4
12		C[C@]12C311	322.407	1.0591	4	4
13		C[C@]12C312	294.397	1.0452	3	4



**Group & connect by:** This setting defines whether to show connection lines between markers. If a category column is chosen, then all markers belonging to one category are independently connected with one line. Select the option **<Don't group, connect all>** if you want all markers connected with one line.

Some datasets, e.g. after an *Activity Cliff Analysis* contain columns, with values of another column in a directional way, e.g. after creating an *Evolutionary Library*, then connection lines are automatically drawn with arrows indicating direction to the parent marker. This option allows to invert the arrow direction.

**Connection order by:** This option defines in which order individual markers of selected groups are connected. Typically, markers are simply connected from left to right, i.e. along the x-axis. Alternatively, any numerical column can be selected to define the order.

**Relative line width:** This defines the width of the connection lines.

**Invert arrow direction:** If markers are connected by a column, which has values of another column in a directional way, e.g. after creating an *Evolutionary Library*, then connection lines are automatically drawn with arrows indicating direction to the parent marker. This option allows to invert the arrow direction.

