
Subject: Re: Saving 2D-structure with labels
Posted by [nbehrnd](#) on Sun, 05 Jun 2022 14:35:25 GMT
[View Forum Message](#) <> [Reply to Message](#)

Dear Vijay,

addressing point 1) and a set of locally defined molecules to use the «copy new image» from a structure view, the export of structures and annotations as .png, or .svg worked well for me. Both exported illustrations contain a representation of the structure and the property previously selected:

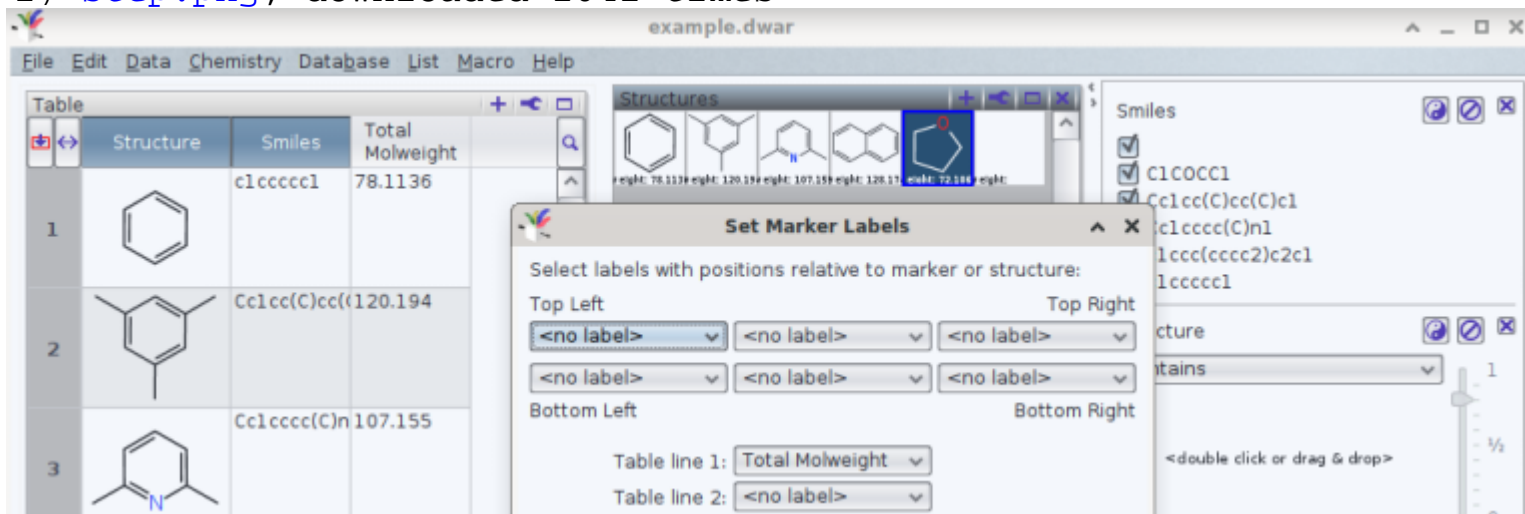
The files exported were read easily by inkscape.[1] Here, I opted for the .png with a solid white background, though it is possible to opt-in for a transparent one. These observations refer to DW 5.5.0 for Linux in Debian 12/bookworm (branch testing) including DW's update by May 13, 2022. Thus, to ease replication of your problem, may you state the DW version you use and share a minimal .dwar file?

Norwid

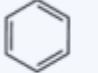
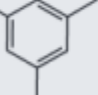
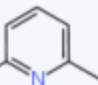
[1] <https://inkscape.org>

File Attachments

- 1) [example.dwar](#), downloaded 611 times
- 2) [step.png](#), downloaded 2041 times



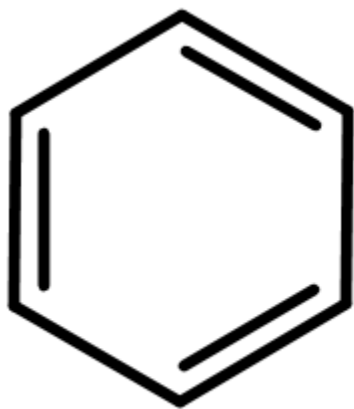
The screenshot shows the DW software interface with a table of chemical structures and a 'Set Marker Labels' dialog box. The table has columns for Structure, Smiles, and Total Molweight. The dialog box allows selecting labels for different positions relative to a marker or structure.

Table	Structure	Smiles	Total Molweight
1		<chem>c1ccccc1</chem>	78.1136
2		<chem>Cc1cc(C)cc(C)c1</chem>	120.194
3		<chem>Cc1cccc(C)n1</chem>	107.155

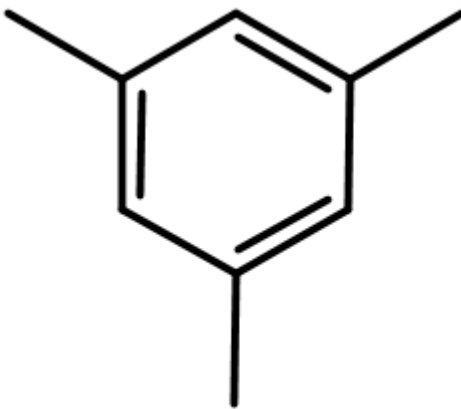
The 'Set Marker Labels' dialog box has the following options:

- Select labels with positions relative to marker or structure:
- Top Left: <no label>
- Top Right: <no label>
- Bottom Left: <no label>
- Bottom Right: <no label>
- Table line 1: Total Molweight
- Table line 2: <no label>

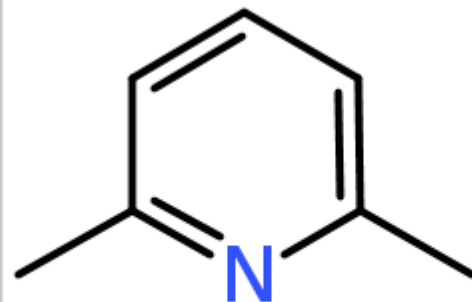
- 3) [example_export.png](#), downloaded 749 times



Molweight: 78.1136



Molweight: 120.194



Molweight: 107.155

4) [example_export.svg](#), downloaded 618 times
